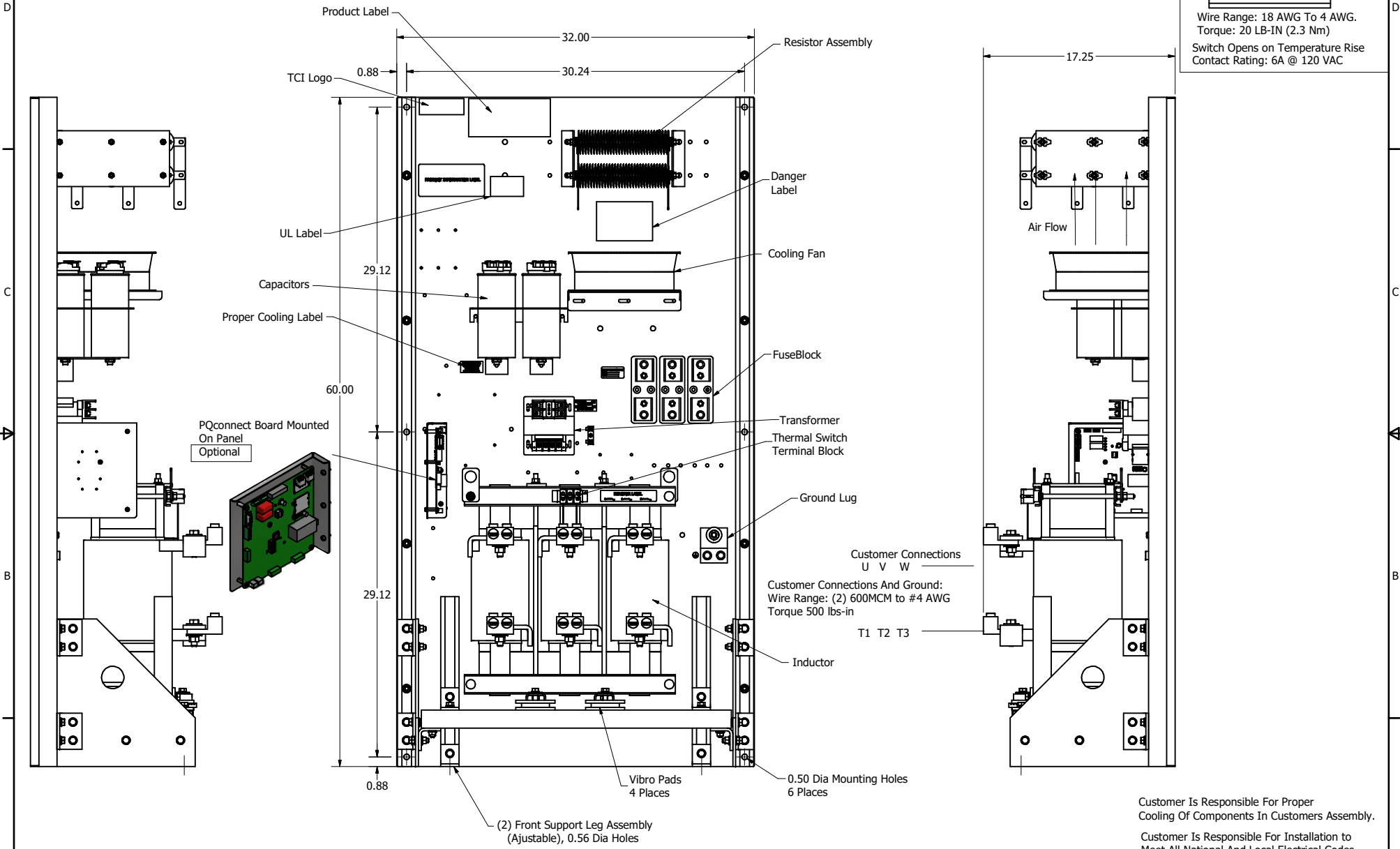
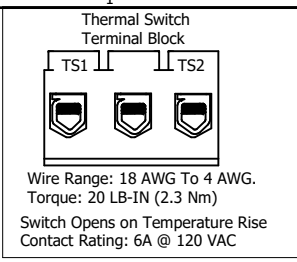


SineWave Part Number	Schematic Drawing#	Approx Weight (LBS)
KMG480A00A	24281-3A	635
KMG480A00P	24281-3P	640

HorsePower (HP)	kVar	Max Amps	Voltage (V)	HZ	Phase
400	40	480	480	60	3



Customer Is Responsible For Proper Cooling Of Components In Customers Assembly.

Customer Is Responsible For Installation to Meet All National And Local Electrical Codes.

Material(s) Shall be RoHS Compliant

TCI, LLC CLAIMS PROPRIETARY RIGHTS IN THE MATERIAL HEREIN DISCLOSED. IT IS SUPPLIED WITHOUT PREJUDICE TO ANY PATENT RIGHTS OF TCI AND MAY NOT BE REPRODUCED OR USED TO MANUFACTURE ANYTHING SHOWN THEREIN WITHOUT WRITTEN PERMISSION FROM TCI.					TOLERANCES (EXCEPT AS NOTED)	W132 N10611 Grant Drive Germantown, WI 53022 <b>KMG480A00- SineWave Filter</b> Open Panel, 400HP, 480V
					DECIMAL	
					.XX ± .25 .XXX ± .10	
					FRACTIONAL	
B Add PQconnect Board	9/14/2020	DSW			± 1/16	DRN BY: DSW DATE: 10/07/2014 SCALE: 1/5 DRAWN: FILE: 104344DG NO. REVISION DATE BY ± 1°